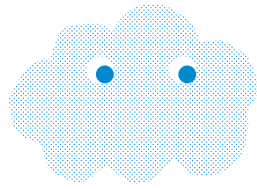


MUTUAL AIR

TUNES THAT DETECT



1. HOST AN ARTWORK
2. MAKE AIR QUALITY INFORMATION MORE PUBLIC
3. IMPROVE YOUR AIR

Mutual Air is an art project that hopes to call attention to the way that our air is used, and how much air quality can change at a micro-scale. It is a series of bells that respond to air quality. The project will help residents of Oakland connect to their shared resource of air, sense how unevenly polluted it is, and encourage them to get involved in making things better.

We are seeking individuals and groups who are interested in “hosting” a bell for 6-9 months. We will take care of installation, maintenance, and removal, but are looking for people who would be willing to let us install a bell at their home, business, organization, or place of worship.

What do they do?

Once a day, the bells will tell the daily average of CO₂ in the global atmosphere and, moment to moment, the relative amount of particulate matter (PM) in the air. The sensors are inexpensive and not precisely calibrated but should give a good general idea of how much PM pollution there is in the area.

Why participate?

Bell “hosts” will receive special training and workshops about air quality. You’ll learn more about the quality of the air near you and you’ll be able to share that information with the public – helping to create conditions for getting air quality equity in Oakland. Once the project is running you’ll be able to access data that the chimes record and share it with the public. All participants in the project will get passes to the Exploratorium and a gift card as a thankyou for participating.

What are you looking for in a host?

We are looking for locations that are near schools, parks, and busy streets or places that people gather.

We are looking for hosts who are enthusiastic and want to know about their air. The bells will be installed by January 2019 and deinstalled by May 2019. You are not liable in any way for theft or damage.

What do they sound like? How loud are they?

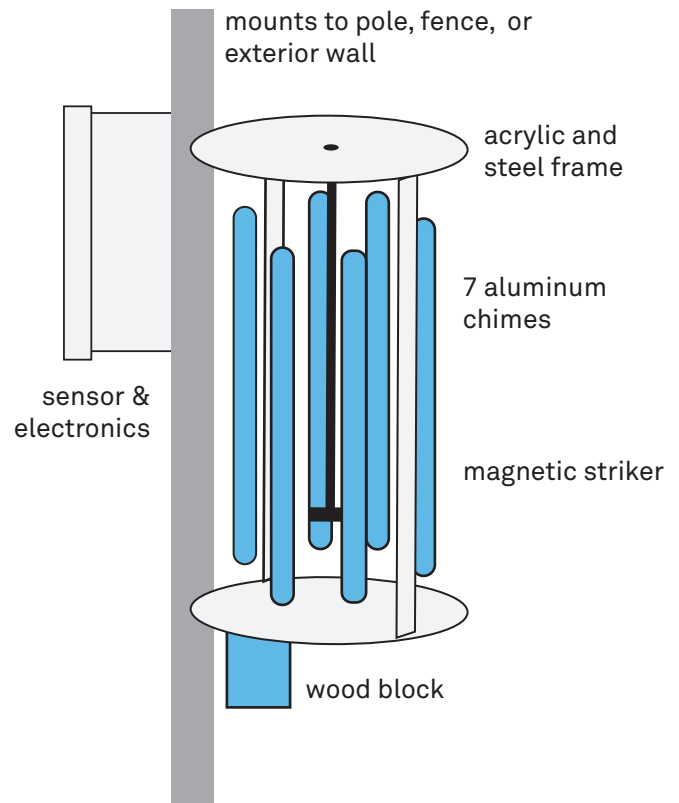
The bells are fairly quiet. Most of the time they will be silent. They have no amplification. When there is a local source of pollution, they sound like wind chimes and, once a day they make a woodblock sound. There will be many ways to turn them off or down. Bells will have a manual shutoff as well as a control panel on-line and a phone number to call for assistance.

I'm interested! How do I sign up or learn more?

Leave a message for Annette and Ramy at (510) 560-7688

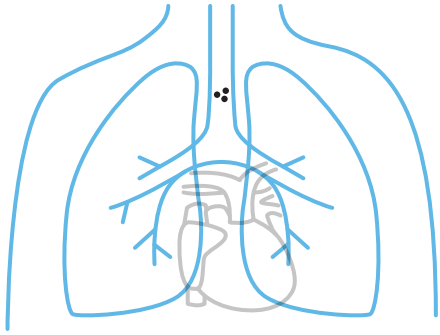
info@mutualair.org

www.mutualair.org



Mutual Air is a project by Rosten Woo and the Exploratorium with key partnerships and cooperation from the Oakland Museum of California, Chabot Space and Science Center, City of Oakland Public Art Program and Cultural Affairs Division, and the West Oakland Environmental Indicators Project. Mutual Air is generously supported by the Kenneth Rainin Foundation's Open Spaces Program.

ABOUT THE AIR



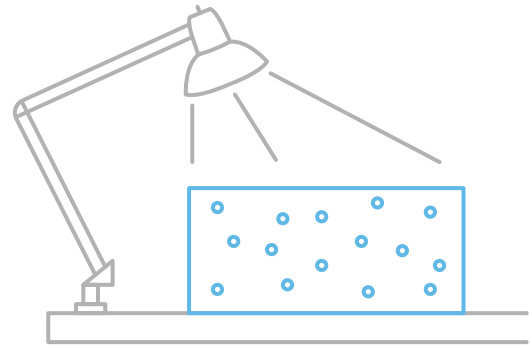
WHAT IS PARTICULATE MATTER AND WHY SHOULD I CARE?

Particulate Matter just means tiny particles, PM_{2.5} means very tiny particles – less than 2.5 microns across. PM is generated by many industrial processes and things like diesel fuel combustion.

The problem is that these tiny particles easily slip into our lungs and bloodstream. They're highly correlated with respiratory disease, heart disease, and even diabetes. The amount of exposure you have matters, how much, for how long. So does your own vulnerability: children and the elderly should, in particular, try to avoid prolonged exposure.

Historically communities of color and low income have had to live near industrial sources of PM – things like factories, coal plants, hubs of transportation that bring lots of diesel trucks. Even through the Bay Area has cleaned up its ambient air quite a lot since the 70's (thanks to the EPA and the BAAQMD) there are many locations with very low air quality. This project is working to make those places more public.

The state is working on a new monitoring plan that will allow us to know more about these very local sources of pollution. This project will create a public presence for the air and encourage people to get involved with this plan.



WHAT IS CARBON DIOXIDE AND WHY SHOULD I CARE?

CO₂ is all around us, it's what we breathe out and it's the stuff that plants absorb to build their mass.

CO₂ also absorbs infrared light. It's what allows the earth to stay warm when the sun goes away.

CO₂ has an annual cycle as plants absorb it in the winter and release it when they decompose in the fall and winter but it also has a clear long-term trend. As we burn fossil fuels, we release more CO₂ into the atmosphere. It changes the balance of heat absorption and diffusion - the average global temperature goes up and this will have dramatic impacts for our planet: sea level rise, ocean acidification, changed weather patterns, extreme weather patterns like floods, drought, wildfires.

These changes will then impact our societies – massive human migration, changed access to land that support crops and land that allows for comfortable living. How we deal with our changed climate will express the values of our society.

CO₂ binds all humanity together. But although we all share the same global atmosphere, some of us are changing it more than others, and some of us will be affected by that change more than others.

